

# BUSSEI SCRIPT

2929 Market Street, San Diego, California 92102

Web: [www.btsd.net](http://www.btsd.net)

E-mail: [info@btsd.net](mailto:info@btsd.net)

Phone: 619-239-0896

VOLUME 78 NO. 3

MARCH 2018

## Ohigan – Sharing the Middle Path

By Rev. Dr. Kenji Akahoshi, Resident Minister



“When you come to a fork in the road, take it.” – Yogi Berra. As a young person in college, I felt that every decision I made would be irreversible and would determine the direction of my entire life. Fortunately, I was wrong. Life is a path of zig-zags. The automatic pilot on an airplane constantly is correcting the flight. As the plane drifts up and down, left and right, the auto-pilot

constantly corrects it toward the final destination. We know what our final destination will be: death. My teacher, Kendrick Mercer said, “Life is a process and not an end. If you don’t enjoy the process, you are going to hate the end.”

Ohigan reminds us of this process. It is described as a path from this shore to the other. In Buddhist thought, the other shore is one of awakening. So, our path is a continual process of awakening. The final awakening is assured. Last month, I suggested that every negative experience, especially the death of a loved one, is an open invitation or gate to awakening. So, rather than suppressing the agony, we might feel it fully. Pain is an important teacher.

The “Middle Path” of the Buddha’s Teaching is a significant core concept. Life is a constant activity of balance. The word “hemostasis” refers to a natural dynamic that all elements are constantly seeking a balance. Sometimes, we humans create an imbalance by our ignorance. For example, the removal of mountain lions and wolves provided a condition of an overpopulation of deer. The land was over-grazed, leaving a degradation of the environment. Are we aware of the damaging effects of our human population?

The “middle path” is not just an ancient religious idiom. It is a truth that is interjected into the core of our lives. Buddhism is a call to awaken to the truths that have governed the life and path of the planet. As human participants in this process of Light and Life, what might we do? Our efforts would be to work tirelessly to urge others to awaken to the forces that determine our present and future. We humans are the single element on earth, that has the intellectual capacity to limit our own destructive action.

As a society and country, we have been able to awaken to the destructive habits of our ignorance and corporate greed. To correct this imbalance, we passed laws that forced companies and cities to comply. Science, concerned citizens, and government have corrected earlier faults. Polluted air and water have been improved. Health concerns of smoking,

unhealthy diets, and lack of exercise have been addressed. Restrictions have been placed on corporate profit from public lands of forests, water, oil, and commercial development. Regulations on automobile safety, construction, transportation, and many other areas have saved countless lives. Yet, many of these positive changes are now challenged by those who place personal gain above the public good. Our first thoughts may be to blame developers, energy companies, and others who look toward short-term gains at the expense of long-term destruction. But as Shin Buddhist, we might look deeper, perhaps at ourselves. Elements of ignorance and greed remain. It is actually our own individual quest for a cheaper, more convenient lifestyle that is fueling this action by large corporations. It may not really be a competition between large corporations and individuals. If we saw this as a competition between our present lifestyle and the lifestyle of our grandchildren, we might really wake up.

It may be difficult to admit that we are part of the problem. But we can be part of the solution. The Middle Path is our guide. We can reduce our personal desire for possessions, and reverse the flow. We can serve or give to others. That tells us that we are fulfilled and can share with others. It is a contrast to the feeling of inadequacy and the desire for more. Dana (self-less giving) is the first Paramita. The ability to give to others is a wonderful feeling, especially when we give to children.

Of course, we will always have our ego desires, even though we know that material possessions have a limited satisfaction. But the antidote is sharing with others. This is evident in our many pot lucks and other activities at the temple. Can we share this attitude beyond our temple community? We are forming a group that can discover ways to help those within our temple and also to the greater community. This “Metta” (Loving Kindness) group will allow adults to copy some projects that our youth groups have been doing (Jr. YBA food drives, Sangha Teens “Walk to Feed the Hungry, etc.) As we awaken to the truth of the “Middle Path,” let us share our fortunes with those who have less.

Gassho

### INSIDE THIS ISSUE...

Page	Page
2 — Calendar	7 — Donations
3 — President’s message, Board of Directors meeting	8 — Donations, Announcements
4 — BWA, Dharma School, Jr. YBA	9-10 — Membership Form
5 — Membership, BEC, Sun Café	11 — Japanese message
6 — Monthly Memorial list	12 — Rev. Tetsuo Unno introduction, Cherry Blossom Festival

# March 2018

SUN

MON

TUES

WED

THURS

FRI

SAT



<p>4 DS Staff Mtg., 9 am, CR DS/Fam./<b>Shotsuki Service</b>, 10a BWA Mtg., 11:45, CR Taiko, Noon, AH Cherry Blossom Prep</p>	<p>5 Office Closed Ways &amp; Means</p>	<p>6 Office Closed</p>	<p>7 Crafts, 10 am, DR Minyo, Noon, SH Shigin, 1 pm, CR Taiko, pm, AH Buddhism 1-2-3, 7 pm, SH</p>	<p>8 Tai Chi, 10 am BOD, 6:45, CR Chry Blsm Prep</p>	<p>9 Jr. YBA Retreat Cherry Blossom</p>	<p>10 BINGO, 6 pm, AH Jr. YBA Retreat <b>JFG Cherry Blossom</b>,</p>
<p>11 Daylight Savings-forward 1 hr Chanting Practice, 9:15, H DS/Family Service, 10 am Jr. YBA Mtg., 11:30, CR Taiko, Noon, AH <b>JFG Cherry Blossom, Balboa</b></p>	<p>12 Office Closed</p>	<p>13 SD Ministers Mtg. at L.A. Betsuin, 10 am</p>	<p>14 Minyo, Noon, SH Shigin, 1 pm, CR Taiko, pm, AH Buddhism 1-2-3, 7 pm, SH</p>	<p>15 Tai Chi, 10 am</p>	<p>16 Koto, 9:30 am, SH <b>BEC Lecture</b> with Rev Unno, 7 pm, SH</p>	<p>17</p>
<p>18 <b>O HIGAN</b>, 10 am With Rev Tetsuo Unno, BCA Minister Emeritus <b>Jr. YBA Udon Fundraiser</b> College YBA Day</p>	<p>19 Office Closed</p>	<p>20</p>	<p>21 Crafts, 10 am, DR Minyo, Noon, SH Shigin, 1 pm, CR Taiko, pm, AH Buddhism 1-2-3, 7 pm, SH</p>	<p>22 Tai Chi, 10 am</p>	<p>23</p>	<p>24</p>
<p>25 Intro Buddhism, 9 am, SH DS/Family Service, 10 am Taiko, Noon, AH <b>IRC Spiritual Café, 3-5 pm</b> <b>Vista Temple visits BTSD</b></p>	<p>26 Office Closed</p>	<p>27</p>	<p>28 Mail Kaiho Minyo, Noon, SH Shigin, 1 pm, CR Taiko, 6:30 pm, AH Buddhism 1-2-3, 7 pm, SH Activities Mtg., 7 pm, CR</p>	<p>29 Tai Chi, 10 am</p>	<p>30 Garden Villas Lunch toban</p>	<p>31</p>
<p>1 Tai Chi, 10 am Eco Sangha, 7p</p>	<p>2</p>	<p>3 Koto, 9:30 am, SH SDDSTL Mini Workshop Vista, 10 am Cherry Blossom Prep</p>	<p>4</p>	<p>5</p>	<p>6</p>	<p>7</p>

## PRESIDENT'S MESSAGE



At the end of January, we had our Annual General Meeting. There is always that worry we won't have a quorum (25 people) to conduct the business at hand. I have to thank all the members that attended as we made it with over 50 people. I want to give my appreciation to all that helped with setting up, serving and cleaning up the potluck portion of the meeting and to the board and affiliated groups for turning in their reports and assisting with running the meeting.

The temple had a lot of things going on the weekend of February 10th and 11<sup>th</sup>. It started with a Bingo Benefit Dinner chaired by Carol and Mike Baker. They had the core group of volunteers, Nancy M, Glenn T, Laura Y, Kikue G, Glenn N, Margo S, and me. The stew was enjoyed by all and many stayed for Bingo led by the VFW.

On the same evening in the Sangha hall, there was a BEC lecture featuring Reverend Nobuko Miyoshi. She is from the West Covina temple. The attendees seem to enjoy her talk on "Flipping Right Side Up". I was able to catch the end when she gave us some background and differences between Nishi and Higashi. Sensei mentioned that she was going to be busy preparing for her talk at the Lady Takeko Kujo Memorial Service sponsored by the BWA plus the Dharma Talk, Adult talk in English and Japanese for the next day. She did a great job.

Thank you to the BWA group led by Kikue Graeber. They also hosted Reverend Miyoshi along with our Ministerial group and us (the Lee's) to a nice lunch. Their group also made the manju for the service.

Also, I was honored to introduce the Board of Directors for the 2018-2019 year. Like many wonderful people that have served on the past temple boards, this group of board members are no exception. They are dedicated and supportive plus have many talents and are so knowledgeable about many different things. I feel so lucky to be among them.

As I close my message this month, I want to share a story I heard while watching the Olympics. The Norway Men's Ski Team does pretty much everything together. There are no secrets in terms of individual tactics or techniques on the team, they share everything they know. They spend about 250 days together so they have to get along with everyone. They have one of the smallest teams but have already won more gold medals than the others.

It was inspiring to hear this and I think the temple is a place where we support one another and in most cases, it is about the team and not the individual.

In Gassho,  
LuAnn Lee

## BOARD HIGHLIGHTS

The Board of Directors met on February 8th -

The Board was updated on the vetting process and the status of the PV installation project.

Funds were approved for the EcoSangha Committee to participate in the Balboa Park Earth Fair event in April.

Improvement projects planned for the first part of the year include finalizing a re-roof bid, purchasing and placing a 20' storage container, and repairing and repainting the exterior trellis and Hondo exterior stairs.

The temple will participate in the Japanese Friendship Garden Cherry Blossom Festival, March 10-11. Volunteers are needed for the event and March 9th, the prep day.

The Board made recommendations for two of the proposals to be voted on at the BCA National Council Meeting.

1. Regarding the sale of BCA real property - recommend delaying action to allow further recommendations or alternatives

2. Raising membership assessment - recommend a "No" vote

The Board approved the elected Board officers for 2018. Ralph Honda introduced a "Snapshot" Committee - Volunteer photographers who will chronicle temple events. Also, Rev. Akahoshi has organized a group of senior members to identify people and events memorialized in our archival photos. The temple will co-sponsor with the Asian Story Theatre a staging of "More Stories of the Sun Cafe", Saturday, April 28th. The Taiko group, Odori Dancers, Dharma School, BWA and Jr. YBA provided updates on their upcoming events and activities. The Board approved inviting Dr. and Mrs. Tanabe, BDK Hawaii, for a presentation on "Japanese Buddhist Temples in Hawaii", September 15 and to address the Sangha on Sept. 16.

The Board approved displaying the BDK Japan Photo Exhibit - "The words of the Buddha in the Landscape of India", December 1st.

## 2018 BOARD OF DIRECTORS

Congratulations to members of this year's BTSD Board who were installed on February 11 during the Nirvana Day service:

### Executive Board Members

**Lu Ann Lee**, President  
**Michael Kinoshita**, 1st VP  
 Ways and Means  
**Glenn Torio**, 2nd VP,  
 Activities  
**Bill Teague**, 3rd VP,  
 Membership  
**Akie Tomiyama**, Treasurer  
**Nancy Martinez**,  
 Recording Secretary

### Board Members

**Karen Okuhara**  
 Corresponding Secretary  
**Tim Kajita**, Audio Visual  
**Ken Muraoka**, Bingo, Scouting

**Roy Okuhara**, Investments  
**Steve Marx**, Technology  
**Kaytee Sumida**, IRC  
**Joyce Teague**, Scholarship  
**Gregg Yonekura**, Solicitation  
**Kimberly Kruse**, Social Media  
**Carol Baker**, Contract Review  
**Laura Yoshida**,  
 Event Coordinator  
**Susan Moribe**, Welfare  
**Ralph Honda**, Operations,  
 Ministerial Affairs  
**Glenn Negoro**,  
 Assistant Treasurer  
**Rev. Dr. Kenji Akahoshi**,  
 Ministerial Advisor

## BWA NEWS

The annual Lady Takeko Kujo and BWA Memorial Service was held on February 11, followed by the Nirvana Day service. We enjoyed hearing our guest speaker, Rev. Miyoshi. Manju made by some of our members led by Fumi Ohara and was served and enjoyed after lunch.

The craft group is currently making crochet Star Wars characters and a variety of other crafts like the washcloth puppies you see below. A tribute to the Year of the Dog. Please join us on the first and third Wednesdays (10 am – 2 pm). All levels of crafters are welcome for fun and a potluck.

It's time to pay your annual \$10 BWA dues. What a bargain! Please bring it to the next meeting or send it to the temple. Thank you!

If you know of anyone who is ill, please let us know.

Check out our BWA website: [southerndistrictbwa.weebly.com/](http://southerndistrictbwa.weebly.com/) or through the direct link from the website for the temple at [btsd.net](http://btsd.net).

Hope to see you at our next meeting on March 4. Group A will



## JR. YBA NEWS

Dear Members of the Temple and Friends of the Jr. YBA,

These past months has been extremely eventful. Our group has been actively participating in Southern District Jr. YBL events, as well as being active around the temple.

In January, we participated with the temple's New Year's service, and Ho Onko and New Year's party.

I helped organize the Southern District Leadership at Gardena on Jan. 6 and 7. Attendees participated in different ice breakers, gain more knowledge on leadership qualities, conduct leadership activities, and create new friendships.

The chapter was present for Southern District Seminar 1 at West LA on Jan. 20. The theme "Stepping Outside Our Comfort Zone." Workshops included blind taste-tests and blindfolded makeovers.

On Feb. 3, members attended the Southern District Volleyball Tournament at OCBC It was a great day of non-stop volleyball and everyone participated! On Feb. 11, our group hosted hospitality following the Nirvana Day service.

Upcoming events in March include a retreat on the 9th and 10th at the temple for Jr. YBA members. "Stranger Teens" is the theme and will be led by Sara Matsumoto. This will be a great bonding and learning experience for members.

We will have an Udon Luncheon Fundraiser after the O Higan service on March 18th. Tickets are \$8.00.

Thank you for your generous donations and support. We look forward to seeing everyone participate and enjoy our upcoming events!

In Gassho,  
Jill Yamanishi, Co-president

## DHARMA SCHOOL NEWS

We wish to thank Rev. Nobuko Miyoshi for providing a message to the Dharma School students for the Nirvana Day service.

On Saturday, March 3, a few Dharma School teachers will attend the So. Dist. Dharma School Teachers League Mini-workshop hosted by the Vista Buddhist Temple Dharma School Teachers. The theme is "My Buddha" and the keynote speaker will be Sensei Ellen Crane, Orange County Buddhist Church.

We are looking forward to the visit of our friends from the Vista Buddhist Temple Dharma School and Sangha members on March 25. They will attend our Dharma School/Family Service and join our Dharma School classes and then have lunch. Service will begin at 10 a.m. Hope you join us to meet and greet our North County friends.

On April 7, we will be decorating the Hanamido for Hanamatsuri at 1 p.m. Dharma School students are encouraged to come out and decorate the Hanamido. Sangha members are also welcome to help make floral arrangements. Please bring floral donations to the dining room. We are also accepting monetary donations. No roses please.

The annual camping trip, sponsored by Dharma School will be May 25-27 at Dos Picos County Park near Ramon. Spend a weekend of "roughing it." The cost will be \$40 per Dharma School families and \$50 non-Dharma School families. Fees include the campsites, food (with the exception of Friday dinner) and crafts. Leslie Seymour is coordinating the event. Sign up today!

Registration will open soon for Dharma School students, ages 8 to 13, who are interested in attending the Los Angeles Buddhist Coordinating Council (LABCC) Summer Camp at Camp Morningstar, in the Angelus Oaks Mountains. Please check the [labcc.org](http://labcc.org) website or check with me for more information.

Happy March Birthday wishes to Oz Wiederkehr, Ayako Enochs, Ava Yamamoto, Kazuo Sannwald, and Paulina Covarrubias.

The next teacher-staff meeting will be on Sunday, March 4 at 9 a.m. in the conference room

Gassho,  
Avis Honda, Superintendent

## COLLEGE DAY GATHERING SET FOR MARCH 18

College students and soon-to-be high school graduates, are encouraged to participate in the temple's College Day on Sunday, March 18. The event is being held offering students a chance to break away from the daily stress of college and to engage in the Dharma under a calm and relaxed atmosphere.

There are many college students who are currently attending or recently graduated from San Diego State, UC San Diego, USD, Cal State San Marcos and local community colleges.

The event is being hosted by the Sr. YBA and will be held in conjunction with the O Higan service. Rev. Tetsuo Unno, Buddhist Churches of America minister emeritus, will present the Dharma message. Following the service, students will have the opportunity to interact with each other and enjoy a wonderful Udon luncheon prepared by the Jr. YBA.

Please contact Breven Honda via email at [brevh831@gmail.com](mailto:brevh831@gmail.com) or the temple [info@btsd.net](mailto:info@btsd.net) for more information.

## MEMBERSHIP NEWS

By Bill Teague, Membership Chairman

### Membership: Over 50% Renewals Already in Place

Wow! After only a month and a half into 2018, as we turn in our Kaiho articles, over half of you have already renewed your 2018 Temple membership.

### Members Joined or Renewed in 2018

We are so grateful to the following **127** members for 2018.

Evelyn Alroy; Corinne Araki-Kawaguchi; Masato Asakawa; Agnes Benson; Jaime Brown; Greg Bull & Julie Watson; Roger Coppock; Yuki Easter; Leah Elliott; Kikue Graeber; Ruby Hara; Arlene & Gene Hasegawa; John & Tsune Hashiguchi; Hiroko Hendrix; Holly & Ronald Hiding; Miyoko Hill; Mikiye Honda; June K. Hosaka; Eugene & Joann Akiko Hotta; Laverne Imori; Henry & Marcia Isakari; Mitsuo & Sally Ishihara; Sheryl T. Ishizaki; Jan & Setsuo Iwashita; Gail & Yukio Iwashita; Naoye Kasubuchi; Mits & Yukio Kawamoto; Mildred & Trace Kawasaki; James & Katsumi Kida; Michael & Yasuko Kinoshita; Margie Kitano; Norman Kiyono; Jeffrey & Kimberly Kruse; Howard Kanji & Kaneko Kuwada; Setsuko Lambert & Tomomi Sakatani; Amy & Peter Masuda; Chiyoko Masumoto; Akiko Matsumoto; Asako Morinaka; Chieko Moriyama; Roy Muraoka; Jake & Patty Nakamura; Sumiye Nakashima; Fred & Nancy Nakatani; Toyo Nishii; Yuko Niwa; Janet Ochi-Fontanott; Arikazu Ogasawara; Ann Ohara; Fumiko Ohara; Kisae Ohara; Shirley Omori; Dennis & Elaine Otsuji; Candace & Rodney Oyama; Claudia Pocquoc; Linda Redenbaugh; Mani Ryan; Bill & Suzanne Sannwald; Wilbur Shigehara; Arlene & Gordon Shimizu; Margo Spears; Tsuruko Sueishi Stark; Chiyeko Sugiyama; Yukiko Sugiyama; Floyd & Kaytee Sumida; Mary Suyenaga; Yuriko Taira; Kikuko Takashima; Kelvin & Lara Tanaka; Bill & Joyce Teague; Kris & Ron T. Tokunaga; Akie & Steve Tomiyama; Sayoko Tomiyama; Betty Torio; Wayne Tsukamoto; Angelina & Motoo Tsuneyoshi; Jeff & Laura Wiederkehr; Yukari Williams; Ron & Sheila Yagura; Jean Yamada; Laurence Yamada; Hisashi & Jane Yamamoto; Joyce & Koichi Yamamoto; Laura Yamaguchi; June Yamamoto; Miyoko Yamanishi; Sumiko Yanagihara; Curt Yasuhara; Mildred & Paul Yasuhara; Gregg Yonekura; Roy & Susan Yonekura; and Laura Yoshida.

**Note:** We make mistakes, so if you had renewed by mid-February and don't see your name listed above, please let us know to correct the error.

### For Those Yet to Renew: How to Make Your Membership Help the Temple

There are two ways you can pay your 2018 dues to give us a leg up in getting through the fiscal year.

**Renew Early in the Year.** By bringing in renewals early in the year the Temple is sure to meet all its obligations and is able to plan accordingly. Delayed renewals make it harder for us in terms of for us in terms of cash flow and increases uncertainty.

**Monthly Credit Card Payments.** Newer members sometimes find it easier to authorize monthly payments through the year. This means the dues come steadily and the Temple can plan accordingly.

**Even a Few Months Earlier Helps Us.** Yes, even paying one or two months earlier this year than last year will still help the Temple and make your dues even more useful.

## BUDDHIST EDUCATION OPPORTUNITIES IN MARCH

### Buddhist Education in March

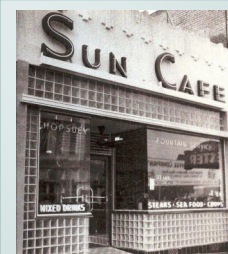
The Buddhist Temple of San Diego welcomes Rev. Tetsuo Unno the weekend of March 17 and 18 to observe the Spring Equinox observance, or *Ohigan*. The word includes both "o" as an honorific and the word *higan*, meaning the other shore (enlightened existence), in contrast to *shigan*, meaning this shore (ignorant existence).

### Buddhism 1-2-3 and Fourth Sunday

Our two ongoing classes continue in March. **Buddhism 1-2-3** provides a chance to chant, meditate, and share the Dharma together in an informal setting, an ongoing class every Wednesday night at 7 p.m. in the Sangha Hall. **Fourth Sunday** is a one-time basic overview of Buddhism and our Temple, and the introduction is especially useful for visitors and college students who want to learn more. This month the Fourth Sunday class is on March 25, at 9:00 a.m. in the Sangha Hall.

**Kenji Sensei** and various temple members alternate in leading Buddhism 1-2-3, and the Fourth Sunday is presented by **Kaytee Sumida**.

Bill Teague, BEC Chairman



## "THERE AND HOME AGAIN: More Stories of the Sun Cafe" by Asian Story Theater

SATURDAY ~ APRIL 28, 2018 ~ 2:00 pm  
BTSD Annex Hall

Experience the iconic Sun Cafe when it was the gathering space for San Diego's JA community. New stories and beloved favorites about real San Diegans! Their tales will make you laugh and touch your heart. Special one-time performance to benefit the Japanese American Historical Society of San Diego

Tix: Early bird: \$20, Advance: \$25,  
Door: \$30, Students: \$20  
(619) 338-8181 / [jahssd@sbcglobal.net](mailto:jahssd@sbcglobal.net)



# MARCH SHOTSUKI LIST

The March Shotsuki Hoyo (MEMORIAL SERVICE) will be held Sunday, March 4, 2018 at 10:00 a.m. in conjunction with the Family Service.

Families and friends of anyone who passed away during the month of March are urged to attend and offer incense. If there are any errors in the list, please notify the temple at (619) 239-0896 or e-mail [info@btsd.net](mailto:info@btsd.net).

*The Temple and Sangha offers sincere condolences to the family and friends of:*

**Lily Yuriko Terusaki ~ January 5, 2018**

**Jeffery Akira Oto ~ January 25, 2018**

3月の祥月法要は、3月4日(日)午前4時より行います。先亡者のご遺族の方々にはぜひ、仏教会へご参詣ください。尚、名簿に間違いがある場合、お手数ですが、仏教会までご連絡ください。(619) 239-0896または、[info@btsd.net](mailto:info@btsd.net)へメールを送ってください。

## DECEASED

## FAMILY MEMBER

Tsugiyoshi Ishisaki (3-16-1913).....	Florence Koga
Tomiye Torimaru (3-18-1923).....	Torimaru Family
Sadao Kinoshita (3-28-1923).....	Kinoshita Family
Senkichi Yanagihara (3-12-1924).....	Yanagihara Family
Iwakichi Okumura (3-23-1934).....	Yamashita Family
Matsu Yamanishi (3-26-1945).....	Miyoko Yamanishi
Yonekichi Tsubakihara (3-27-1959).....	Kent Tsubakihara
Mizuno Nakano (3-28-1959).....	Minako Nakano
Shina Shindo (3-28-1959).....	Friends
Tokumatsu Shiosaki (3-14-1960).....	Teruko Iwata
Yoshigoro Mamiya (3-8-1961).....	David Kawamoto
Kura Hashimoto (3-16-1961).....	Kuko Mayeda
Dennis Suyenaga (3-24-1961).....	Mary Suyenaga
Sawa Yamanishi (3-18-1962).....	Miyoko Yamanishi
Taiki Ikemi (3-22-1964).....	Charles Ikemi
Ichinosuke Kiyono (3-7-1965).....	Norman Kiyono
Tsune Haseyama (3-5-1966).....	Noboru Haseyama
Fude Hirai (3-9-1967).....	Dorothy Mansfield
Shuji Kaneko (3-17-1967).....	Kaneko Family
Zenkichi Iwashita (3-8-1968).....	Iwashita Family
Yoshito Yamamoto (3-9-1969).....	Kanji Kuwada
Akira Date (3-18-1969).....	Shirley Umekubo
Fusamatsu Morimoto (3-19-1971).....	Morimoto Family
Motono Oto (3-22-1972).....	Oto Family
Matsu Higuchi (3-26-1972).....	Yasuko Higuchi
Shina Nishiuye (3-18-1975).....	Yoshiro Nishiuye
Shimeno Nabeta (3-30-1975).....	Joyce Teague
Shunzo Sakamoto (3-29-1976).....	Nobuko Amano
Buyemon Ohara (3-1-1977).....	Ohara Family
Roy Yamada (3-10-1977).....	Kimi Yamada
Teru Kiyono (3-27-1978).....	Kiyono Family
Kiyotaro Osaki (3-13-1979).....	Sayoko Tomiyama
Yuku Hosaka (3-20-1980).....	Hosaka Family
Masaaki Tanizaki (3-25-1981).....	Friends
Hanano Matsui (3-11-1983).....	Jack Matsui
Tetsu Tachiki (3-18-1983).....	Tachiki Family
Masaru Yanagihara (3-9-1984).....	Yanagihara Family
Suna Torio (3-24-1985).....	Betty Torio

## DECEASED

## FAMILY MEMBER

Haruhiko Otsuji (3-3-1986).....	Otsuji Family
Sukeichi Yamada (3-16-1986).....	Keisuke Yamada
Grace Hosaka (3-6-1987).....	Hosaka Family
Kimi Terada (3-24-1987).....	Etsuko Smith
Shiro Takahashi (3-19-1988).....	Sugioka Family
Susumu Yagi (3-23-1989).....	Chiye Yagi
Zenpachi Kubota (3-28-1989).....	Chiyo Kubota
Tsune Yamasaki.....	Atsuko Thomas
Hideo B. Watamura (3-10-1990).....	Elizabeth Takasaki
Hisaji Taniguchi (3-15-1993).....	Robert Taniguchi
Miyuki Takanashi (3-31-1994).....	Minoru Takanashi
Thomas Yonekura (3-1-1995).....	Roy Yonekura
Haruki Koba (3-25-1995).....	Duane Koba
Mieko Holt (3-29-1995).....	Joe Holt
Masaru Niwata (3-29-1995).....	Joe Niwata
Shoichi Nomura (3-28-1997).....	Kiyoko Nomura
Chisato Kuroye (3-18-1998).....	Roy Kuroye
Kiyo Kawasaki (3-22-1998).....	Trace Kawasaki
Rosie Yamada (3-4-2001).....	Laurence Yamada
Fumie A. Martin (3-23-2001).....	Tazuno Lowell
Masahito Iwanaga (3-6-2002).....	Masami Iwanaga
Kiyoko Hazel Baker (3-10-2002).....	Tanaka Family
Michael S. Kawamoto (3-13-2003).....	Yukio Kawamoto
Misao Kawasaki (3-5-2005).....	Kawasaki Family
Mark Isao Kasubuchi (3-27-2005).....	Naoye Kasubuchi
Rui Nemoto (3-11-2007).....	Hayashi Family
Fred Nabeta (3-14-2007).....	Joyce Teague
Sam Amano (3-6-2008).....	Takeko Amano
Yoshiko Kawato (3-28-2009).....	Nancy Nakatani
Susumu Kawato (3-22-2010).....	Nancy Nakatani
Tadami Maruyama (3-12-2011).....	Michi Maruyama
Katie Tomoe Krause (3-28-2011).....	Pamela Lopez
Shizuko Tsukamoto (3-3-2012).....	Wayne Tsukamoto
Mary Haruko Yagura (3-5-2013).....	Ron Yagura
Ben Shizuto Sekishiro (3-30-2013).....	Victor Sekishiro
Bruce Ryou Moriyama (3-24-2014).....	Chieko Moriyama
Gilbert Shuji Wakisaka (3-27-2015).....	Gail Susan Wakisaka
Tohoru Hidutsu Shimizu (3-1-2016).....	Paula Shimizu
Richard Iwao Ito Sr. (3-21-2016).....	Richard Ito

## MEMORIAL SERVICES

MEMORIAL SERVICES allow us to pay homage to loved ones who have passed away. In our Jodo Shinshu tradition, family members hold a service at certain intervals following a relative's death to express gratitude for and acknowledge their continuing influence in our lives. If you wish to schedule a memorial service for a loved one, please call during weekly office hours.

**2018 is the memorial year for those who passed away in:**

1st Year Memorial	2017	13th Year Memorial	2006	27th Year Memorial	1992
3rd Year Memorial	2016	17th Year Memorial	2002	33rd Year Memorial	1986
7th Year Memorial	2012	25th Year Memorial	1994	50th Year Memorial	1969

## DONATIONS

The Buddhist Temple of San Diego is grateful to the following individuals and organizations for their recent donations to the Temple and its affiliated organizations. "IMO" means "In memory of." For a corrections or questions, please contact the temple office at (619) 239-0896 or [info@btsd.net](mailto:info@btsd.net). Beginning with this issue, we will not list individual amounts.

### BTSD

Kawasaki, Kiyoshi & Itsuko-- In appreciation of hard work by all  
Iwai, Harold T and Vivian  
Mrs. Vivian Iwai - 1 year Memorial Serv.  
Reynolds, T.M. -- Memorial Service - Kimie Fukamizu  
Ulrich, Veronica Consuelo  
Mrs. Carroll McGuire Service  
Hara, Ruby  
Russman-Halperin, Robert  
IMO Lily Yuriko Terusaki  
Sugiyama, Chiyeko - Mem. Serv.

### BWA MEMORIAL SERVICE

Ruth Voorhies  
Asako Morinaka  
Chieko Sugiyama  
Yukiko Sugiyama  
IMO Hamako Nakamura  
Midori Kamimura  
IMO Ei Kamimura  
Yuriko Nogata  
Susan Yonekura  
Mary Suyenaga  
Asako Morinaka  
Chieko Moriyama  
IMO Chiyo Yano  
IMO Betty Yano  
IMO Dorothy Matsumoto  
IMO Shizuye Yamamoto  
IMO Betty A. Torio  
Sayoko Tomiyama  
IMO Wasa Osaki  
Mikiye Honda  
IMO Momoyo Amano  
IMO Fumino Honda  
Sumiye Nakashima  
IMO Momoyo Amano  
Lynn Fuchigami  
IMO Setsuko Himaka  
Fumiko Ohara  
Alice Aoyama  
IMO Toshiko Takagi  
Shirley Omori  
IMO Kiyoko Omori  
Aki Tomiyama  
Angie Tsuneyoshi  
IMO Saka Tsuneyoshi  
IMO Tetsu Yamasaki

Emi Ochi  
Miyoko Yamanishi  
Chiyoko Masumoto  
IMO Yuki Masumoto  
IMO Peggy Tsurudome  
Irene Tomoi  
Miyo Hill  
Koyoshi Nakamura  
Naomi Himaka  
IMO K. Himaka  
IMO H. Okamoto  
Kikuko Takashima  
IMO Tsume Takashima  
IMO Yoshiko Takashima  
IMO Ryu Yonekura  
IMO Yoshi Yonekura  
IMO Yoshiko Iwataki  
Tsune Hashiguchi  
IMO Fuji Hashiguchi  
Kathy Katsumi Kida  
Ruth Voorhies  
IMO Kotonno Takahashi  
Eugenia Kashima  
Mitsuko Kawamoto  
Betty Torio  
Kikue Graeber  
Gary Himaka  
IMO Setsuko Himaka  
Dennis Otsuji  
Ayako Otsuji  
Alice Matsumoto  
IMO Nobue Nishii  
Jane Yamamoto  
IMO Mary Yagura  
Sumiko Yanagihara  
Mildred Kawasaki  
IMO Fumi Yamashita  
IMO Kiyoko Kawasaki  
Ann Koba  
IMO Micheko Koba  
IMO Shizue Koba  
Junko Kajita  
Joyce Teague  
IMO Ritsu Nabeta  
Mike Doi

### DHARMA SCHOOL

Watson-Ochi, Shirley  
Yasuhara, Paul  
Asakawa, Masato (Bruce)  
Kasubuchi, Naoye  
Estes, Toshiye

### FLORAL OFFERING

Spears, Margo  
Watson-Ochi, Shirley  
Yasuhara, Paul  
Asakawa, Masato (Bruce)  
Kasubuchi, Naoye  
Estes, Toshiye

### GEN MAINTENANCE

Spears, Margo  
Watson-Ochi, Shirley  
Yasuhara, Paul  
Asakawa, Masato (Bruce)  
Kasubuchi, Naoye  
Estes, Toshiye

### HO-ON-KO SERVICE

Monji, Yoshiko  
Masumoto, Chiyoko

### IMPROVEMENTS

Nishii, Toyo -- Solar  
Matsumoto, Akiko & Ken-  
Solar  
Morinaka, Asako - Solar  
Yonekura, Roy - Solar

### MAP (Minister's Assist)

Yasuhara, Paul  
Asakawa, Masato (Bruce)  
Kasubuchi, Naoye  
Estes, Toshiye

### MEMBERSHIP 2018

Poquoc, Claudia  
Watson-Ochi, Shirley  
Yamanishi, Alan  
Sumida-Johnson, Ann  
Tanizaki, Gary  
Tanaka, Kelvin  
Tsuneyoshi, Miki  
Niwa, Yuko  
Yasuhara, Paul  
Asakawa, Masato (Bruce)  
Kasubuchi, Naoye  
Hendrix, Hiroko

### MOCHI GOME

Muraoka, Ken

### NIRVANA DAY

Kawasaki, Kiyoshi & Itsuko  
Sumida, Floyd  
Sugiyama, Yukiko

Spears, Margo  
Tomiyama, Steve  
Nakamura, Jake K.  
Kawasaki, Trace  
Okuhara, Roy  
Yonekura, Roy  
Yamanishi, Miyoko  
Masumoto, Chiyoko  
Morinaka, Asako  
Takashima, Helen K  
Tsuneyoshi, Motoo  
Hill, Miyo  
Ohara, Fumiko  
Otsuji, Dennis  
Aoyama, Rev Tesshi  
Graeber, Kikue  
Kawamoto, Yukio and Mitsuo  
Torio, Betty  
Hagio, Quimico  
Tanaka, Kelvin  
Guiang, Cynthia  
Matsumoto, Akiko and Ken  
Kashima, Jeanie  
Ong, Mike  
Yamamoto, Hisashi  
Lee, Harold and LuAnn  
Kida, Katsumi  
Hashiguchi, John  
Tomiyama, Sayoko  
Kajita, Timothy  
Honda, Mikiye  
Fuchigami, Lynn S.  
Voorhies, Ruth  
Yanagihara, Sumiko  
Torio, Glenn  
Jones, Mikako  
Suyenaga, Mary  
Nogata, Sumihiro  
Tsuji, Masako  
Kodama, Jay  
Moriyama, Chieko  
Shigehara, Wilbur  
Kuwada, Howard Kanji  
Monji, Kiyoshi  
Honda, Ralph  
Martinez, Nancy  
Hendrix, Hiroko

### OBON

Ojiri, Doug - Obon 2017

Continued next Page

**Donations Cont.**

**SCHOLARSHIP FUND**

Spears, Margo  
Watson-Ochi, Shirley  
Yasuhara, Paul  
Asakawa, Masato (Bruce)  
Kasubuchi, Naoye  
Estes, Toshiye

**SHOTSUKI HOYO**

Yamamoto, George & Ann  
IMO Kiyotaro Osaki  
Takashima, Helen K  
IMO Toshiharu Yonekura  
Yamanishi, Miyoko  
Himaka, Michio  
IMO Patsy Yanagihara  
IMO Suma Shimada

Hill, Miyo  
Honda, Mikiye  
Tsuneyoshi, Motoo  
IMO Mother,  
Sada Tsuneyoshi  
Inouye, Jeanne M.  
IMO Carol Inouye  
Ohara, Fumiko  
Torio, Glenn  
Aoyama, Rev Tesshi  
IMO S J Takagi  
Ryan, Mani and Ed  
IMO Ron Nishinaga  
Nakamura, Jake K.  
IMO Koyoshi Nakamura  
Yanagihara, Sumiko

Amano, Nobuko  
IMO Mitsuru Amano  
IMO Yaeno Amano  
Niwa, Yuko  
IMO Tsuneo Niwa  
Uyeji, Masako  
IMO Eda Asamen  
IMO Shokichi Kodama  
Masumoto, Chiyoko  
IMO Yuki Masumoto  
Nakamura, Shari  
IMO Oto Date  
IMO Fuji Nakamura  
IMO Pauline Nakamura  
Kasubuchi, Naoye  
IMO Masao Sugiyama  
IMO Fumiko Momita

Clogston, Madeline  
IMO Mike Moriyama  
Takashima, Wilbur  
IMO Bunshiro Takashima  
IMO Patsy Yanagihara  
Liss, Kathryn  
IMO James Nicholas Link

**SPRING O HIGAN**

Yamamoto, George & Ann  
Estes, Toshiye  
IMO Patsy Yanagihara  
Shigehara, Wilbur  
IMO my mother,  
Yoshiko Shigehara  
Morinaka, Asako  
IMO Suzy Yamada



**SCRIP NEWS**

At the general meeting, the scrip account was able to write a check for \$2000.00 to BTSD. Thanks to everyone who buys gift cards from the scrip program. Once you start using them, you'll wonder why you didn't start purchasing them sooner.

Everyone needs to buy groceries so if you're not participating in the Ralph's community program, we have Albertson's, Stater Brothers, Sprouts, Target, Von's, and Walmart gift cards on hand. With spring right around the corner, you might want to have some restaurant gift cards handy. We carry Darden (Olive Garden), Chili's, Panera, IHOP, and Denny's. Great Lakes Scrip Center carries many other restaurants such as Jack in the Box, Carl's, SmashBurgers, Islands, Red Robin, Outback, Ruth Chris, and many more.. BUY SCRIP! Remember – you get the full value of your order and the temple gets a percentage of what you paid.

**BINGO UPDATE**

BTSD/VFW BINGO @Annex Hall

**March 10, 6 - 9 pm**

Enjoy an evening with family and friends  
and be ready to yell out BINGO!



photo by Quilt Inspiration

**IRC Spiritual Café**

Hosted by the Interreligious Council of San Diego  
Topic: **LIVING IN BALANCE**

Presenter:

Rev. Dr. Kenji Akahoshi

You are invited to share your thoughts over coffee, tea, and vegetarian snacks.

**Sunday, March 25, 2018**

3pm-5pm

Admission : FREE

**Buddhist Temple of San Diego**

**JR. YBA UDON LUNCHEON FUNDRAISER**

**Sunday, March 18, 2018**

Time: 11:30 a.m. to 1:00 p.m.

Donation: \$8.00 ~ Dine in or take out

*Purchase tickets from any Jr. YBA member or call/  
email the temple to make your reservation.*

*Thank you for supporting our spring fundraiser!*

**BTSD Tai Chi**



Our Tai Chi instructor is easy to follow and patient, so come and check it out. (Your doctor may tell you it's good for your balance). We are asking for a suggested donation of \$5 per session, (optional).

**Thursdays, March 1, 8, 15 & 22  
10-11 a.m. in the Annex Hall**



**Craft Days**  
1st & 3rd  
**WEDNESDAYS,**  
10am-2 pm,  
**BTSD Dining Room**  
Join us for some crafty fun,  
Good conversation  
and great memories!  
Bring a dish to share for the pot-luck!

# BUDDHIST TEMPLE of SAN DIEGO 2018 Membership

## A. PLEASE START WITH MEMBER NAME(S)    New    Renewing

Member 1:  Mr  Ms  Mrs \_\_\_\_\_

Member 2:  Mr  Ms  Mrs \_\_\_\_\_

## B. MEMBERSHIP LEVEL - Circle the Amount or Write In

LEVEL	CATEGORY	ANNU-AL	MONTHLY	Q'LY	Notes
Wisteria	Family/Couple	1200	100	300	<b>Family/Couple Level</b> The Family/Couple level refers to <b>the adult members</b> of the family. Most single parents also choose this
	Individual	600	50	150	
Dana	Family/Couple	576	48	144	<b>Bodhi</b> This is the option for generous donations above the Wisteria level.
	Individual	336	28	84	
Bodhi	Family/Couple				<b>Optional Senior Discount</b> Available for members 75 years or older.
	Individual				
Senior(s)	Two Seniors	360	30	90	
	One Senior	180	15	45	

## C. TEMPLE PROGRAMS - Circle the Amount or Write In

Floral Offer- ing	Recommended	40	3	10	For beautiful flower offerings at the three shrines for the Buddha, Shinran Shonin, and Rennyō Shonin.
	Your Choice				
General Maintenance	Recommended	40	3	10	For gardening: Both Temple and minister's residence.
	Your Choice				
Dharma School	Recommended	20	2	5	For support of the programs initiated by the Dharma School for the children.
	Your Choice				
Scholarships	Recommended	20	2	5	For graduating high school seniors and continuing education students from Temple members.
	Your Choice				
Minister's Assistants	Recommended	20	2	5	For fees and costs of ongoing certification of the Minister's Assistants.
	Your Choice				

Totals of Amounts (B and C)

--	--	--

# BUDDHIST TEMPLE of SAN DIEGO 2018 Membership

## D. New Membership Info/Updates for Current Member

**Renewal with No Updates** →→→ Proceed to Part E.

**Member 1** Occupation: \_\_\_\_\_ Birthdate \_\_\_\_\_

Email address: \_\_\_\_\_ Preferred phone: \_\_\_\_\_

**Member 2** Occupation: \_\_\_\_\_ Birthdate \_\_\_\_\_

Email address: \_\_\_\_\_ Preferred phone: \_\_\_\_\_

Street Address: \_\_\_\_\_

City: \_\_\_\_\_ State: \_\_\_\_\_ ZIP: \_\_\_\_\_

## E. NEWSLETTER/KAIHO PREFERENCES

Print

Email

Both

## F. PAYMENT METHOD

Cash or check payable to BTSD

Credit or debit card.

## G. AUTHORIZATION (REQUIRED)

I/We understand that

- Membership dues will be renewed each year, and you can change levels or preferences at any time.
- In future years members or sponsors will receive a statement of assumed dues and program donations for the coming term (based on previous dues and donations) for review and modification as needed.
- **Members or sponsors paying by credit or debit card** are authorizing its use for renewal with specific account information as follows.

### Payor's Authorized Signature Required

Member 1. \_\_\_\_\_

Member 2. \_\_\_\_\_

A percentage of your dues supports the Buddhist Churches of America and is remitted annually to the BCA via the Temple. Benefits include a year's subscription to the BCA publication, *Wheel of Dharma*, and a printed copy of our monthly newsletter, the *Bussei Script*. THANK YOU!

マウンテンビュー 仏教会 「回向」  
二〇一八年三月法話

びやくれんげ

白蓮華のように

駐在開教使 向嶋諦史

皆さんも存知の通り、蓮の花は仏教經典の中に数多くでてまいります。その中でも、浄土真宗で大切にしている『仏説観無量壽經』の中で、お釈迦さまは次のようにおっしゃっておられます。「もし、ここに念仏するものがあるならば、その人こそ、まことに人々の中で白蓮華ともたえられる尊い人であると知るがよい。それゆえ、観音、勢至の二菩薩は、その人の為にするれた友となつてくださる。そこで、その人は、諸仏の家である阿弥陀仏の浄土に生まれて、かならず成仏するのである」と。  
また、親鸞聖人も『正信偈』の中で、「善人も、悪人も、どのような人達であっても、阿弥陀仏の本願を信じれば、その人はすぐれた智慧を得たものであり、汚れの無い白蓮の華のようである」と念仏者を讃えておられます。言うまでもなく、蓮の花は仏教の象徴の花とされ、仏さまや菩薩さまのほとんとは、この蓮台の上におられます。では何故、この蓮の花を仏教ではシンボルの花とするのか皆さんは、存知でしょうか？  
実は、蓮は清流の中では育ちません。よどんだ泥沼の中、汚い泥の中から芽を出します。芽は伸び、大きな青い葉を広げ、そうして、優雅な花を咲かせます。そこには一点の泥も染まっています。泥土の中に育ちながら、しかも泥土に染まらず美しい花を咲かせる。そのような尊い生き方は、煩惱の泥にまみれた私達人間に、悟りの道を歩もうと願う心を駆り立ててくれます。ですから、

私達は、この蓮華の美しさの中に仏教の象徴的意義を見出して、仏教の代表的な尊い華とするのです。

私達は、煩惱という泥にまみれた「濁りの世界」を生きていますが、「どうせ死ぬまで煩惱具足の凡夫なのだから、何をやっても意味がない」と、自己の泥(煩惱)を肯定し、仕方がないと投げやりな人生を歩むようであれば、その人は泥の中にあつて泥に染まってしまった人といえるでしょう。

また、「欲や怒りの心を起こしてはならない。全ての泥をなくさないことには悟りの世界は開かれない」という人がいますが、こうした人達は、清流の中にこそ、蓮の花が育つと思つている人といえます。

しかし、あらゆる我欲を離れたら、私のいのちは一日として保つことはできません。泥の中でないと、私達は一人として生きていけないのです。ですから親鸞聖人は「煩惱を捨てよ！ 絶て！」と教えられるどころか、「絶てないものはそのまま引き受けよ」と、煩惱をしようとして立つ生き方を教えて下さっているのです。ここに「断の仏教」と「転の仏教」があるのです。

欲や怒りなどといった心は私達の人生そのものを汚すものであるから、迷いの根源である煩惱を断とうとする考え方「これを「断の仏教」、つまり、煩惱を断じて助かる仏教をいいます。

それに対して、「転の仏教」というのは、煩惱を断つという発想を超えています。これがまさに「蓮」と「泥」で表現されているのです。泥の中で育つ蓮の花は、泥色に染まっても当然なのですが、あらゆる条件を受け入れながらも泥に染まらないように真摯にひたむきに生きてきた結果、あのような美しい蓮の

花が咲くのです。けれど美しい蓮の花を咲かせてみたら、あの泥はなくてはならないものだったのです。清流では決して咲かせることのできない、あの泥があつてこそ世界なのです。ですから、捨てるべき泥が決して捨てられない泥になるのです。この発想を煩惱を転じて助かる仏教といえます。

私達は煩惱の渦巻く濁りの世界に身を沈めています。が、この泥の中から、美しい蓮の花を咲かせるためには、阿弥陀仏の大いなる本願を仰ぐ身とならねばなりません。

念仏者は確かに煩惱具足の凡夫であり、深い泥の中にいます。しかし、念仏者は、泥の中に生きているという深い自覚と反省があります。それは決して、泥の中に溺れ染まっているではありません。泥の中にありながら、泥だらけの私の中にこそ、蓮の花(阿弥陀仏の慈悲)は根をおろして下さっているという喜びがあるのです。これこそ、親鸞聖人がおっしゃる「転の仏教」なのです。

そして、どうせこの世は、濁りの世であるからと、投げやりになるのではなく、「濁りの身、濁りの世」への積極的な働きとして、内においては憤みの心を忘れず、他に向かつては、敬いの心、慈しみの心、感謝の心を大切にすると、念仏者としての人生を歩むことが最も大切なことなのです。

泥の中にあつて阿弥陀仏の本願を仰ぎ、そのおはたらきの中で生かされている我が身を喜ばせて頂く念仏者として、私達一人ひとりが、お釈迦さまや親鸞聖人が讃えられた「白蓮華」であることを誇りに、報恩感謝のお念仏と共に豊かな人生を歩ませて頂きたいと切に願つております。



## The Japanese Friendship Garden CHERRY BLOSSOM FESTIVAL

### MARCH 10 & 11

SATURDAY & SUNDAY 10AM—4PM

- Experience Cherry Trees ■ Japanese food ■
- Shop Unique Gifts ■ Beer & Tea Tastings ■
- Play at the Children’s Corner
- Share Cultural Performances

### Calling All Volunteers for the Cherry Blossom Festival!

We will need to get ready for the festival  
*Here at BTSD, on: March 8, 9, 10 & 11*

*At the Japanese Friendship Garden on:*

Saturday, March 10, 10 a.m. —4 p.m.

Clean Up, 4 p.m. —6 p.m.

Sunday, March 11, 10 a.m. — 4 p.m.

Clean Up, 3 p.m. —5 p.m.



Check out Google Docs to Sign UP

Or sign up in the office, or call to put your name on the list. **Thank YOU**

### BCA NATIONAL COUNCIL MEETING

Kenji Sensei, LuAnn Lee and Maribeth “Smitty” Smith represented the temple at the annual BCA National Council Meeting, Feb. 23-25 in Sacramento.

Representatives from nearly all 60 BCA temples attended the weekend meetings.

Breven Honda attended the Young Leaders of Today (YLT) conference that was held simultaneously with the NCM.

A brief recap will appear in next month Bussei Script. In depth coverage will appear in an upcoming issue of the BCA’s Wheel of Dharma.

The 2019 meetings will take place March 6-10 in Phoenix.



## Spring O Higan

Sunday, March 19, 10 a.m.  
with **Rev. Tetsuo Unno**

BCA Minister Emeritus  
~~~~~

BEC presentation by  
Rev. Unno on March 17  
starting at 7 p.m.

As part of our Ohigan observances, on Saturday evening, Unno Sensei will present a mini-seminar and explore what Buddhism means by such a basic concept as *enlightenment*. And while the term *salvation* is often used in a Christian context, it is sometimes used in describing the dynamics of Buddhism as well.

The event will take place at the Sangha Hall. The event is free and open to the public. Light refreshments will be served.

### About Rev Unno

**Rev. Tetsuo Unno** has a distinguished career marked by service to both the temples of the Buddhist Churches of America and the academic community. As minister, he serves at the Pasadena Buddhist Church and previously at Seattle Betsuin and the Senshin Buddhist Church. As professor, he has taught at UCLA (Introductory Japanese), CSUN and CSULB (Religious Studies). As a scholar of Shin Buddhism his focus expands to include Zen, Depth Psychology, Philosophy (Existentialism, etc.), Literature (Dostoevsky, Kafka, etc.). Rev. Unno has studied at UC Berkeley (English Lit.), Ryukoku Univ. (Shin Buddhism), and Tokyo Univ. (Buddhism).

### FRIDAY SENIOR LUNCH PROGRAM

The temple wishes to thank Kiku Graeber and Naomi Himaka and their crew for preparing and serving lunch at the Villa Gardens Senior Friday lunch program. Enchiladas with all the fixings was on the menu. Everyone enjoyed the lunch.

Senior lunches are held every Friday from 12:00 noon to 1 p.m. There is a nominal fee for the lunch.

Villa Gardens (formerly Kiku Gardens) is located at 1260 Third Avenue in Chula Vista.

The next opportunity for the temple to provide lunch will be on Friday, March 30. Please contact the temple if you wish to volunteer with the lunch program.

### O HIGAN OFFERING

*An envelope is enclosed for your O Higan offering. For those who subscribe to the Bussei Script online, we invite your O Higan donation. As always, the Temple looks forward to your participation and is very grateful for your support.*